

General Notes



eco window systems

9114 NW 106TH STREET
 MEDLEY, FL 33178
 TEL: 305-863-2223
 FAX: 305-863-2291

JOB NAME
 WINDOW REPLACEMENT
JOB ADDRESS

No.	Revision/Issue	Date

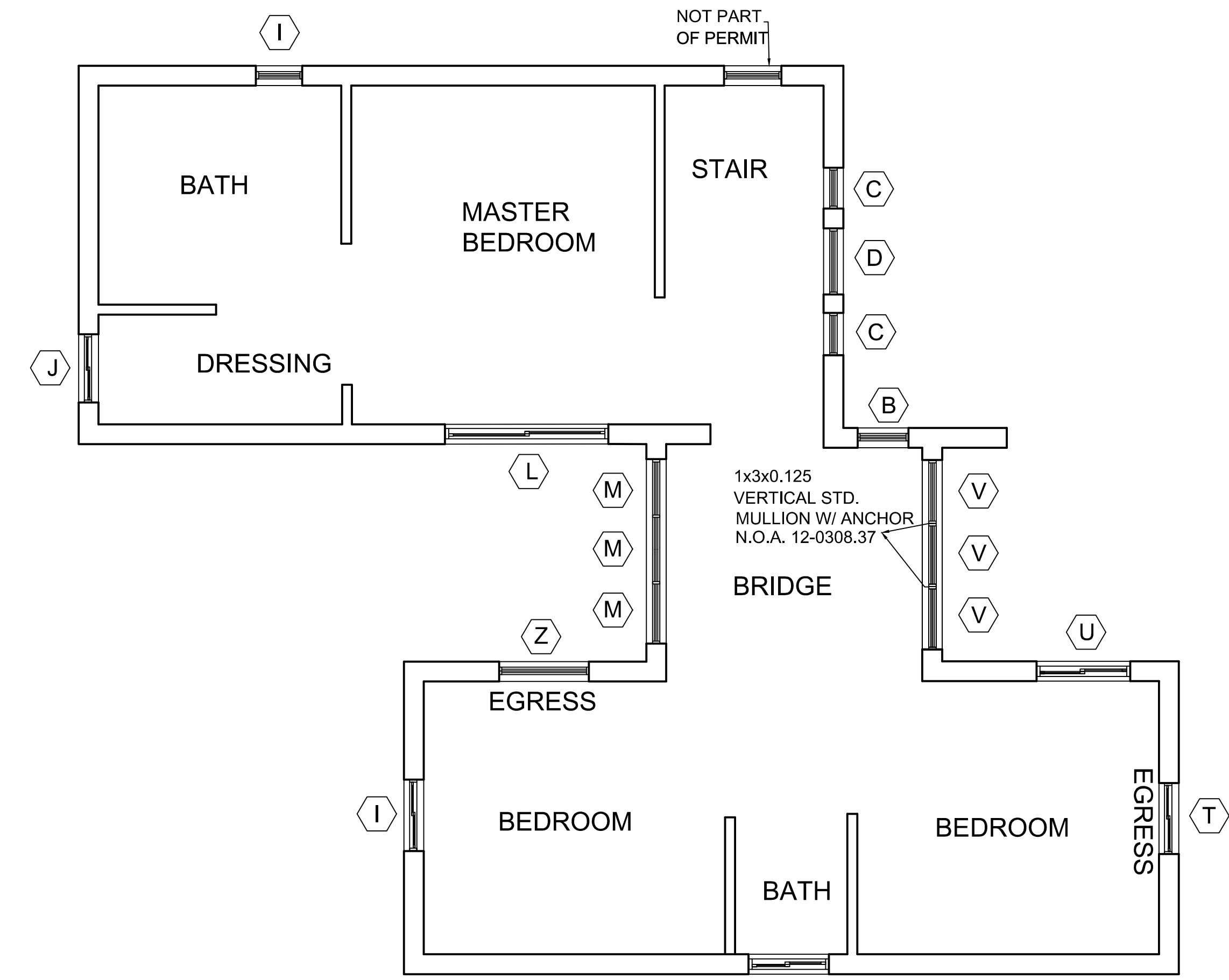
Sheet name
PERMIT

Name
LOCATION PLAN

Drawn: JCREY	Sheet
Date 11/06/2013	1
Scale N/A	

DOORS SCHEDULE								
MARK	DESCRIPTION	GLAZING	TINT.	FRAME COLOR	PANEL STYLE	WIDTH X HEIGHT	MANUF./ MODEL	(N. O.A.)
1	ALUMINUM FRENCH DOORS IMPACT RESISTANT	5/16"LAM. (TYPE "G1")	GREY	WHITE	XX	74 1/2"x 80 3/4"	ECOSERIES 600 FRENCH DOORS	12-0402.03
2	ALUMINUM FRENCH DOORS IMPACT RESISTANT	5/16"LAM. (TYPE "G1")	GREY	WHITE	XX	74" x 81"	ECOSERIES 600 FRENCH DOORS	12-0402.03
3	ALUMINUM FRENCH DOORS IMPACT RESISTANT	5/16"LAM. (TYPE "G1")	GREY	WHITE	XX	74 1/4"x 81 1/4"	ECOSERIES 600 FRENCH DOORS	12-0402.03
5	ALUMINUM FRENCH DOORS IMPACT RESISTANT	5/16"LAM. (TYPE "G1")	BRONCE	BRONCE	OXXO	SL=2(22" x 96") D= 72" x 96"	ECOSERIES 600 FRENCH DOORS	12-0402.03

WINDOW SCHEDULE								
MARK	DESCRIPTION	GLAZING	TINT.	FRAME COLOR	PANEL STYLE	WIDTH X HEIGHT	MANUF./ MODEL	(N. O.A.)
A	ALUMINUM HORIZONTAL ROLLING WINDOW IMPACT RESISTANT	5/16" LAM. (TYPE "A")	GREY	WHITE	XO	35 1/2"x 47 1/2"	ECO WINDOWS SERIES 200	13-0206.03
B	ALUMINUM FIXED WINDOW IMPACT RESISTANT	7/16" LAM. (TYPE "C")	GREY	WHITE	P.W.	35 1/2"x 47 1/2"	ECO WINDOWS SERIES 300	13-0206.05
C	ALUMINUM FIXED WINDOW IMPACT RESISTANT	7/16" LAM. (TYPE "C")	GREY	WHITE	P.W.	23 1/2"x 23 1/2"	ECO WINDOWS SERIES 300	13-0206.05
D	ALUMINUM FIXED WINDOW IMPACT RESISTANT	7/16" LAM. (TYPE "C")	GREY	WHITE	P.W.	36 3/4"x 24"	ECO WINDOWS SERIES 300	13-0206.05
D	ALUMINUM FIXED WINDOW IMPACT RESISTANT	7/16" LAM. (TYPE "C")	GREY	WHITE	H.C.	R=18.12"	ECO WINDOWS HALF CIRCLE	13-0206.05
E	ALUMINUM FIXED WINDOW IMPACT RESISTANT	7/16" LAM. (TYPE "C")	GREY	WHITE	P.W.	23 1/2"x 23 1/2"	ECO WINDOWS SERIES 300	13-0206.05
H	ALUMINUM HORIZONTAL ROLLING WINDOW IMPACT RESISTANT	5/16" LAM. (TYPE "A")	GREY	WHITE	XO	35 1/2"x 47 1/2"	ECO WINDOWS SERIES 200	13-0206.03
I	ALUMINUM HORIZONTAL ROLLING WINDOW IMPACT RESISTANT	5/16" LAM. (TYPE "A")	GREY	WHITE	XO	23 3/4"x 24"	ECO WINDOWS SERIES 200	13-0406.03
J	ALUMINUM HORIZONTAL ROLLING WINDOW IMPACT RESISTANT	5/16" LAM. (TYPE "A")	GREY	WHITE	XO	35 3/4"x 47 1/2"	ECO WINDOWS SERIES 200	13-0406.03
K	ALUMINUM HORIZONTAL ROLLING WINDOW IMPACT RESISTANT	5/16" LAM. (TYPE "A")	GREY	WHITE	XO	47 1/2"x 47 1/2"	ECO WINDOWS SERIES 200	13-0406.03
O	ALUMINUM HORIZONTAL ROLLING WINDOW IMPACT RESISTANT	5/16" LAM. (TYPE "A")	GREY	WHITE	XO	36 3/4"x 35 3/4"	ECO WINDOWS SERIES 200	13-0406.03
P	ALUMINUM HORIZONTAL ROLLING WINDOW IMPACT RESISTANT	5/16" LAM. (TYPE "A")	GREY	WHITE	XO	47 3/4"x 47 3/4"	ECO WINDOWS SERIES 200	13-0406.03
Q	ALUMINUM HORIZONTAL ROLLING WINDOW IMPACT RESISTANT	5/16" LAM. (TYPE "A")	GREY	WHITE	XO	26"x 25"	ECO WINDOWS SERIES 200	13-0406.03
S	ALUMINUM SINGLE HUNG WINDOW IMPACT RESISTANT	5/16" LAM. (TYPE "A")	GREY	WHITE	XP	23 3/4"x 24"	ECO WINDOWS SERIES 100	13-0418.03
T	ALUMINUM CASEMENT WINDOW IMPACT RESISTANT	5/16" LAM. (TYPE "A")	GREY	WHITE	XL	35 1/2"x 47 1/2"	ECO WINDOWS SERIES 500	13-0206.07
U	ALUMINUM HORIZONTAL ROLLING WINDOW IMPACT RESISTANT	5/16" LAM. (TYPE "A")	GREY	WHITE	XO	36"x 47 3/4"	ECO WINDOWS SERIES 200	13-0206.03
V	ALUMINUM FIXED WINDOW IMPACT RESISTANT	7/16" LAM. (TYPE "C")	GREY	WHITE	P.W.	36"x 47 1/2"	ECO WINDOWS SERIES 300	13-0206.05
Z	ALUMINUM CASEMENT WINDOW IMPACT RESISTANT	5/16" LAM. (TYPE "A")	GREY	WHITE	XL	35 3/4"x 47 1/2"	ECO WINDOWS SERIES 500	13-0206.07
X	ALUMINUM HORIZONTAL ROLLING WINDOW IMPACT RESISTANT	5/16" LAM. (TYPE "A")	GREY	WHITE	XO	35 1/2"x 47 1/2"	ECO WINDOWS SERIES 200	13-0206.03
Y	ALUMINUM STOREFRONT IMPACT RESISTANT	9/16" LAM. (TYPE "G1L")	GREY	WHITE	O	3(36 1/8"x 107 3/4")	ECO WINDOWS SERIES 400	12-0801.02
M	ALUMINUM STOREFRONT IMPACT RESISTANT	9/16" LAM. (TYPE "G1L")	GREY	WHITE	O	3(36"x 79 3/4")	ECO WINDOWS SERIES 400	12-0801.02
N	ALUMINUM FIXED WINDOW IMPACT RESISTANT	7/16" LAM. (TYPE "C")	GREY	WHITE	P.W.	58"x 32"	ECO WINDOWS SERIES 300	13-0206.05
L	ALUMINUM HORIZONTAL ROLLING WINDOW IMPACT RESISTANT	5/16" LAM. (TYPE "A")	GREY	WHITE	XOX	107"x 47 3/4"	ECO WINDOWS SERIES 200	13-0206.03



SECOND FLOOR PLAN



GROUND FLOOR PLAN



9114 NW 106TH STREET
MEDLEY, FL 33178
TEL: 305-863-2223
FAX: 305-863-2291

JOB NAME
WINDOW REPLACEMENT
JOB ADDRESS

No.	Revision/Issue	Date

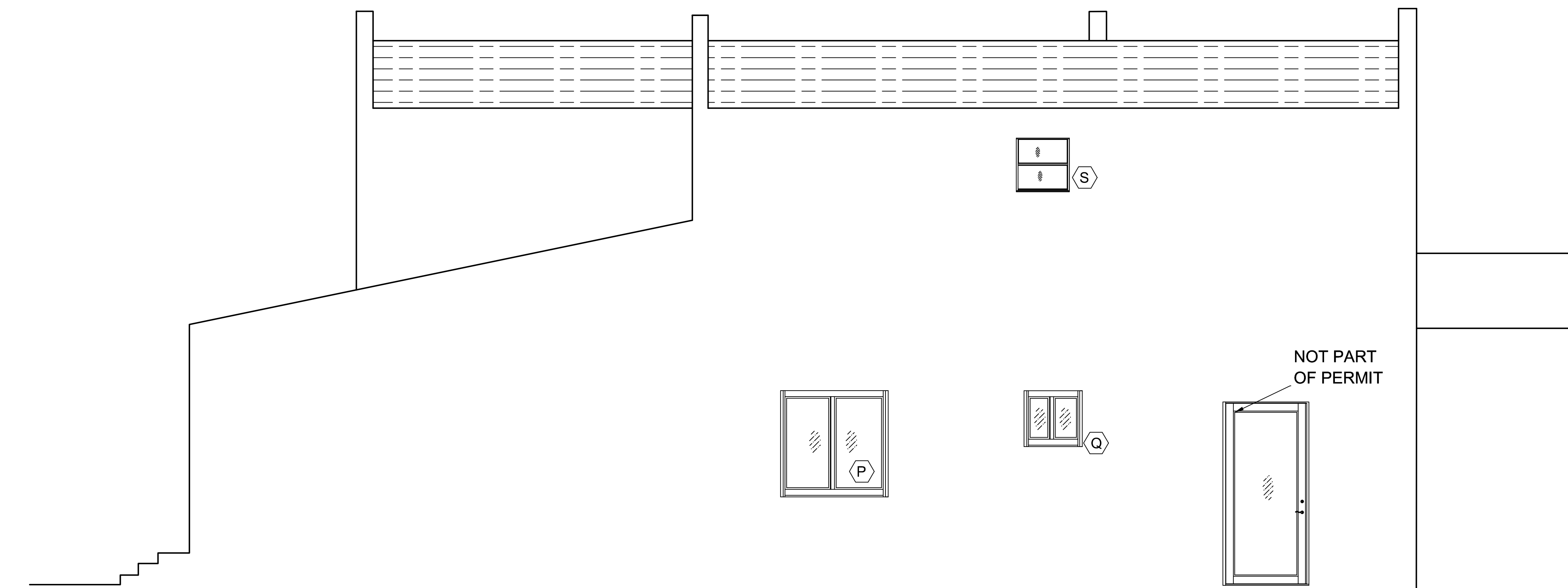
Sheet name
PERMIT

Name
FLOOR PLAN
WINDOW SCHEDULE

Drawn: JC REY	Sheet 2
Date 11/6/2013	
Scale 1/4" = 1'-0"	



EAST ELEVATION



NORTH ELEVATION

JOB NAME
 WINDOW REPLACEMENT
JOB ADDRESS

No.	Revision/Issue	Date

Sheet name
PERMIT

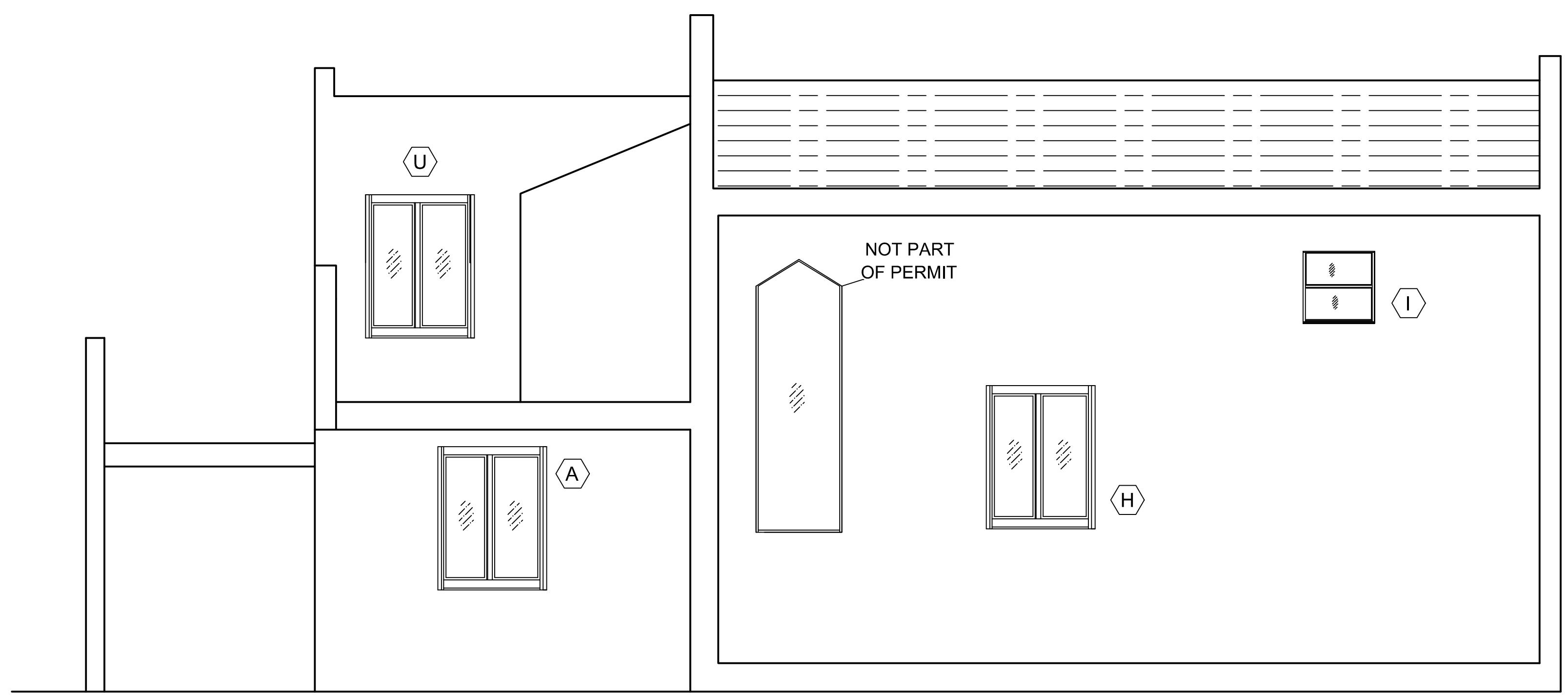
Name
ELEVATION

Drawn: JCREY	Sheet
Date 11/06/2013	3
Scale 1/4" = 1'-0"	

JOB NAME
 WINDOW REPLACEMENT
JOB ADDRESS



WEST ELEVATION



SOUTH ELEVATION

No.	Revision/Issue	Date

Sheet name
PERMIT

Name
ELEVATION

Drawn: JCREY	Sheet
Date 11/06/2013	4
Scale 1/4" = 1'-0"	